

Notice

The information in this document is subject to change in order to improve reliability, design, or function without prior notice, and does not represent a commitment on the part of the company.

In no event will we be liable for direct, indirect, special, incidental, or consequential damages, arising out of the use or the inability to use the product or documentation, even if advised of the possibility of such damages.

No part of this reference manual may be reproduced or transmitted in any form or by any means without the prior written permission of the company.

Trademarks

All brand names are trademarks of their owners.

Limited Warranty

Our Company warrants this product against defects in materials and workmanship for a period of one year from the date of purchase. During the warranty period, a product determined by us to be defective in form or function will be repaired or, at our option, to be replaced at no charge. This warranty does not apply if we have been damaged by accident, abuse, misuse, or as a result of service or modification other than the product.

April 9, 2003

Notice

The information in this document is subject to change in order to improve reliability, design, or function without prior notice and does not represent a commitment on the part of this company.

In no event will we be liable for direct, indirect, special, incidental, or consequential damages arising out of the use or the inability to use the product or documentation, even if advised of the possibility of such damages.

No part of this reference manual may be reproduced or transmitted in any form or by any means without the prior written permission of this company.

Trademark Acknowledgements

All brand name & trademarks are the property of their owner.

Limited Warranty

Our Company warrants this product against defects in materials and workmanship for a period of one year from the date of purchase. During the warranty period, a product determined by us to be defective in form or function will be repaired or at our option, to be replaced at no charge. This warranty does not apply if we have damaged by accident, abuse, misuse, or as a result of service or modification other than the product.

Much TV USB 2.0 User Manual

Contents

● Much TV USB 2.0 Introduction	4
● 1.1 Much TV USB 2.0 Features	4
● 1.2 Product Specification	5
● 1.3 Product Detailed List	6
● 1.4 System Requirements	7
● 2.1 Installation & Connect	7
● 2.2 Hardware Outlook Introduction	8
2.2.1 Front / Side Panel	8
2.2.2 Rear Panel	9
● 2.3 Installing Software	10
2.3.1 Introduction to TV Plus	10
2.3.2 The overview TV Plus	11
● 3.1 Options / Functions Basics	13
● 3.2 Help	22
● 3.3 Troubleshooting	23
● 2.4 Remote Controller operation	24

Much TV USB 2.0 Introduction

Much TV USB 2.0 is an advanced video-displaying capturing box which provides you with high quality PC theater solution.

Much TV USB 2.0 allows you to capture 30fps, 704x480 resolution high quality image on the PC or notebook hard disk via USB2.0.

Much TV USB 2.0 captures CD quality stereo audio by 16bits, 48KHz sampling rate with A/V synchronization feature.

Moreover, the snapshot function lets you catch 704x480 still images from your video source.

With the user-friendly program TV Plus, you can easily transfer the captured bit stream into other standard formats as your wish, such as AVI, MPEG4, VCD, DVD and so on. The operation between your DVD player and PC through Much TV USB 2.0.

1.1 Much TV USB 2.0 Features

- 1.Supports one composite video & S-video input for VCR, DVD, Video Camcorder or TV games.
 - 2.High resolution: NTSC 704x480 or PAL 704x576.
 3. 30 frames per second.
 - 4.Captures Bit Stream via USB 2.0 / USB1.1.
 - 5.Easy to install and easy to use. It is compatible with Microsoft Windows 98/ Me/2000/XP.
 - 6.Adjustable Saturation/Contrast/Hue/Brightness.
-

7. Blue Screen Protection Function. (While no signal input)

8. Bandwidth Adaptive Automatically Control.

9. Capture and Record as Standard Format (ex. AVI, MPEG1, MPEG4 etc.).

10. Audio Capture & A/V Sync. Function.

11. Professional Snap Shot Function.

12. Two Display Modes: Capture Mode, Playback Mode.

13. Scheduled Recording Function.







14. Fashion Industry Design with tiny Size: 75(L) x 50(W).

1.2 Product Specifications

- **Connector Input :**
 1. RF TV-input
 2. Component Video input
 3. S-Video Video input
 4. Audio input
 5. VGA input (Mini Din 6Pin)
 6. DC input
- **Connector Output :**
 1. TV Video (Composite) output

1.3 Product Detailed List

- Much TV USB 2.0 x1
- Much TV USB 2.0 DC Adapter x1
- Much TV USB 2.0 IR Remote Controller x1
- Multi-Video In Cable (MUI Cable) x1
- USB A to B Cable x1
- Battery #4 (Size AAA 1.5 Volts) x2
- User Manual x1
- Video Capturing software x1

		
Much TV USB 2.0	Much TV USB 2.0 DC Adapter (5V 1.2A)	Much TV USB 2.0 IR Remote Controller
		
USB A to B Cable	Multi-Video In Cable (MUI Cable)	Battery #4 (Size AAA 1.5 Volts)

1.4 System Requirements

1. Intel Pentium III 800MHz or higher
2. Microsoft Windows 98/ME/2000/XP
3. 128 MB of RAM
4. VGA with 8MB video memory
5. Any speed CD-ROM drive (for software installation)

2.1 Installation & Connect

To use Much TV USB 2.0, your computer must have the following hardware and software.

Installing hardware:

Follow the procedures below to connect your Much TV USB 2.0 to your PC:

1. Connect the DC adapter to the power socket to turn power on.
2. Connect Box USB2.0 mini-USB to the USB port on your PC.
3. Connect the Box USB2.0 AV connector to the AV port on your PC.



2.2 Hardware Outlook Introduction

2.2.1 Front / Side Panel

Follow the procedures below to install your TV Plus software on your computer system:

1. Insert the CD into your computer.

2. Execute setup.exe to install TV Plus.

3. Follow the TV Plus instructions to finish the installation.

Note: If you connect the Box USB 2.0 cable to the USB port on your PC, please refer to the following instructions to start the TV Plus software.

1. Connect the TV Plus Box to the PC via the USB 2.0 cable.

2. Turn on the TV Plus Box. The TV Plus software will be installed on the PC.

3. The TV Plus software will be installed on the PC. The TV Plus software will be installed on the PC.

4. The TV Plus software will be installed on the PC. The TV Plus software will be installed on the PC.

5. The TV Plus software will be installed on the PC. The TV Plus software will be installed on the PC.

6. The TV Plus software will be installed on the PC. The TV Plus software will be installed on the PC.

7. The TV Plus software will be installed on the PC. The TV Plus software will be installed on the PC.

8. The TV Plus software will be installed on the PC. The TV Plus software will be installed on the PC.

9. The TV Plus software will be installed on the PC. The TV Plus software will be installed on the PC.

10. The TV Plus software will be installed on the PC. The TV Plus software will be installed on the PC.



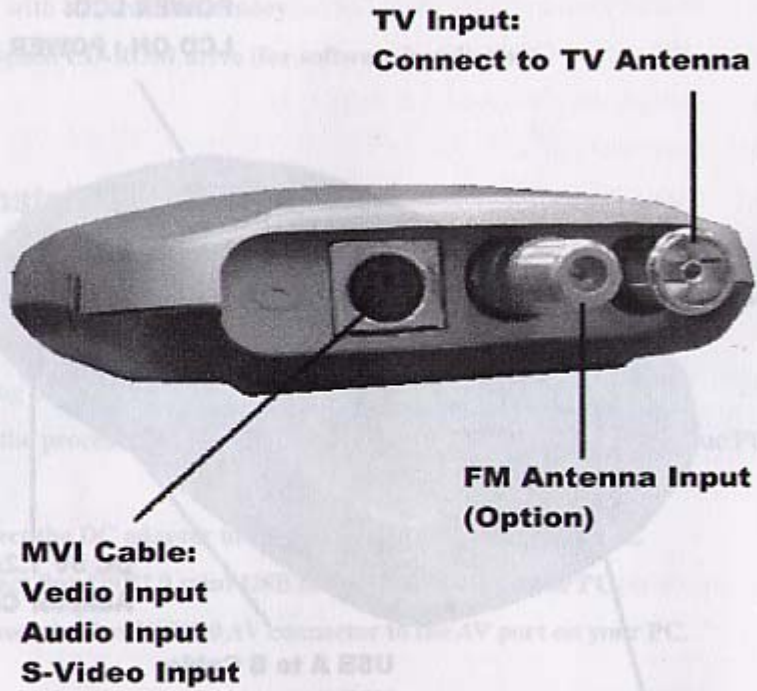
**POWER LCD:
LCD ON : POWER ON**

**DC 5V 1.2A:
Adaptor Connected**

**USB A to B Cable:
USB output**

**IR Receiver:
Infrared Rays Receiver**

2.2.2 Rear Panel



2.3 Installing software:

Follow the procedures below to install your TV Plus software on your computer system:

1. Insert the CD into your computer.
2. Execute setup.exe to install TV Plus.
3. Follow the on-screen instructions to finish the installation.

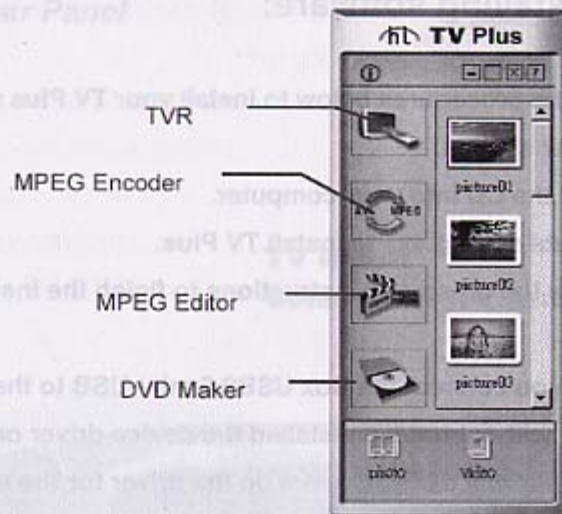
Note: If you connect the Box USB2.0 mini-USB to the USB port on your PC without having installed the device driver on your system, your system will ask you to set up the driver for the newly input device. Find your CD-ROM drive from the list and click on the name of the disc, and then choose the folder named USB 2.0_Drive to start the installation.

2.3.1 Introduction to TV Plus

With a user-friendly interface, TV Plus enables you to quickly and easily display your video files, convert them into other formats, make an appointment of recording the playing video, take snapshots of the displayed clips, and then save them into the specified location.

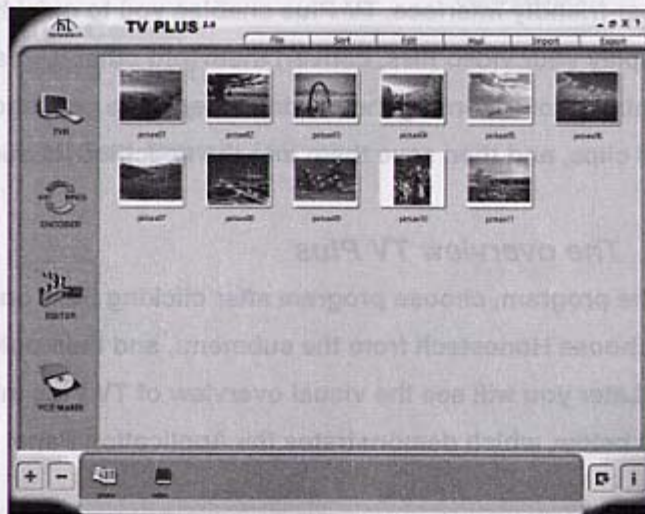
2.3.2 The overview TV Plus

To start the program, choose program after clicking Start on your taskbar, choose Honestech from the submenu, and then point to TV Plus 2.0. Later you will see the visual overview of TV Plus interface shown as below, which demonstrates the Application Panel of TV Plus:

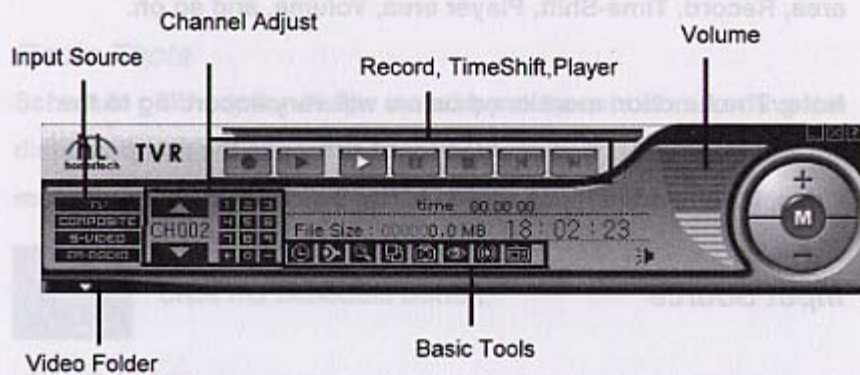


Click on the TVR icon to turn your PC into a full-featured digital video recorder for TV via Much TV USB 2.0.

The full screen of TV Plus in TVR mode will appear as the following picture:



With TV Plus Navigation Panel, which is below the preview window, you can enjoy most advantages this program provides. Check the overview of the Navigation Panel below to Window Preview learn more about the functions.



Option FM Control



3.1 Options/Functions Basics

This section briefly explains each option on the Navigation Panel. In order to let you have a fair view of these options, the description below is divided into several parts according to the figure illustrated above, including Input Source area, Channel Adjust area, Basic Tools area, Record, Time-Shift, Player area, Volume, and so on.

Note: The function mentioned below will vary according to the version you hold. , if your video input source is the composite video, if your video input source is the S-video format.

Input Source

You are enabled to set your input video source as COMPOSITE or S-Video here.

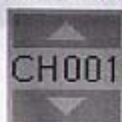


COMPOSITE: Click the COMPOSITE icon, format.

S-Video: Click the S-VIDEO icon

Channel Adjust

While watching TV, you may change the channel by this remote controller. The channel list will display the current channel.



You may click over the Channel Up or Channel Down buttons to move to the desired channel one at a time.

To add the desired channel to the list, simply click over the number on the controller and then click +.

The chosen channel number will then be displayed on the left-side channel list.

To remove the current channel from the list, click on the controller , to open the Schedule settings dialog box.

Basic Tools

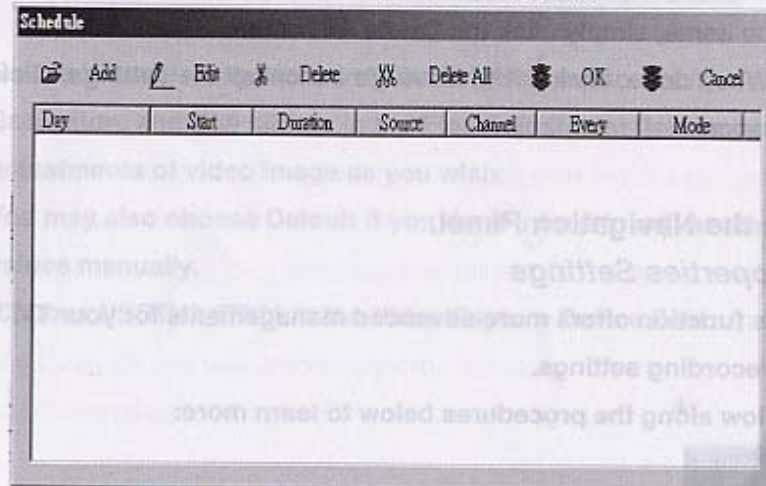
Schedule : This option helps make appointments of recording the displayed video. Follow the procedures below to pre-schedule the recording date and rearrange the existing appointments:



Click the Schedule button,

2. To add a new appointment, click Add.

Then the Schedule-Add dialog box will appear.



-
3. Define the intended input video source in the Input Source field.
 4. Define the desired channel in the Channel field, and then in the Every field, assign the recording frequency as once, daily or weekly by choosing Once, Day, or Week.
 5. In the Mode field, select View or Rec as the display mode.
 6. In the Start Time and How long fields, individually set the recording date and the length of recording time.
 7. Click Add to add the setting to the schedule and close the dialog box. If you intend to ignore the setting, click Cancel. Then you are back to the Schedule settings dialog box.
 8. To edit the existing items listing in the dialog box, simply click over the desired item, and then click Edit to open the Schedule-Add dialog box. For more instruction for the dialog box, refer to step 3 to 7.
 9. To delete a listed item, click over it and then select Delete in the Schedule settings dialog box to remove it. If you wish to remove all the items, simply click the Delete All button.
 10. When done, click OK to leave. To cancel all the settings, click Cancel.

On the Navigation Panel.

Properties Settings

This function offers more advanced managements for your TV, Video or recording settings.

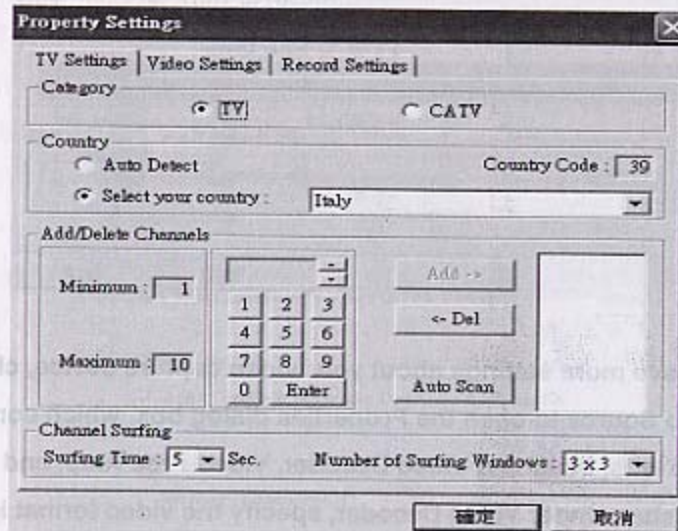
Follow along the procedures below to learn more:



1. Select the Properties Settings button,

Settings dialog box will then appear. Two tabs are included in this dialog box: TV Settings / Video Settings / Record Settings.

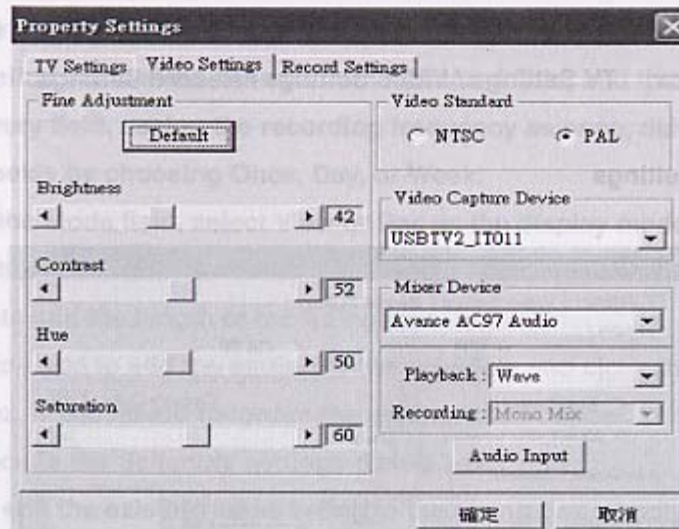
1. TV Settings



2. On the Video Settings tab, drag the Brightness, Contrast, Saturation, and Hue sliders in the Fine Adjustment field to make adjustments of video image as you wish.

You may also choose Default if you don't intend to adjust the values manually.

3. Choose USBTV2_IT011 in the Video Capture Device field.

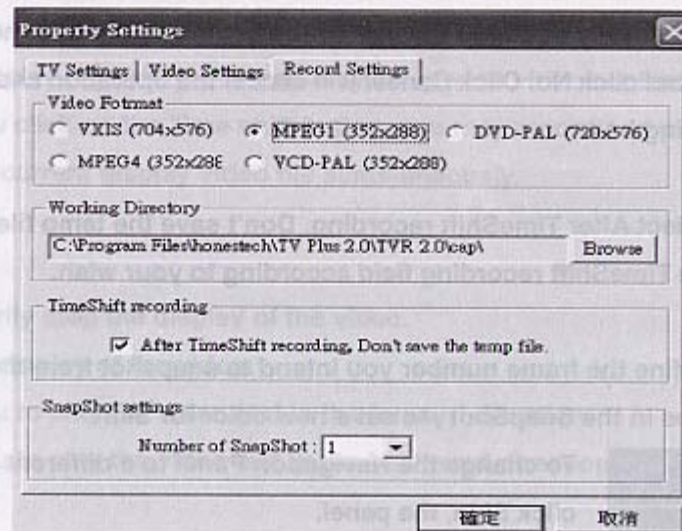


4. To have more settings about your video capture device, click **Video Source** to open the **Properties** dialog box, which contains three tabs, including **Video Decoder**, **Video Proc Amp**, and **Crossbar**. Under **Video Decoder**, specify the video format in the **Video Standard** field and tick the **Output Enable** option if you intend to. On the **Video Proc Amp** tab, click the **Default** button to automatically set the video display performance. However, you may intend to define them manually by dragging the **Brightness**, **Contrast**, **Hue**, **Saturation**, and **Sharpness** sliders to make adjustments of video image as you wish. While under the **Crossbar** tab, in the **Input** and **Output** fields, define input and output crossbar configurations, and tick the **Link Related Stream** box when you finish the settings, click **Apply** and then **OK** to close the dialog box.

1. Select the **Properties Settings** button,

5. In the Mixer Device field, define a mixer device and the state for Playback or Recording. Clicking the Audio Input button may open the Windows Volume Control dialog box, in which you are allowed to make adjustments of volume level.

6. On the Recording Settings tab,



set the video format for the recorded video clips in the Video Format field, and then specify the location in which you wish to store the recorded video clips by clicking Browse in the Working Directory field. In the opened Change Folder dialog box, specify the intended directory and then click OK to save the file.

settings field.

When you are done, click OK.

Auto Scan

If you are operating the *COMPOSITE* mode, you may select this option to have you TV auto scan the available channels. After choosing this function, you will see a message box appear as below: Click Yes to add the founded channel manually to your channel list. If you click Yes to All, all of the scanned channels will then be automatically added to the list. To refuse adding the scanned channel click No. Click Cancel will cancel the operation and close the warning box.

7. Select After TimeShift recording. Don't save the temp file option in the TimeShift recording field according to your wish.

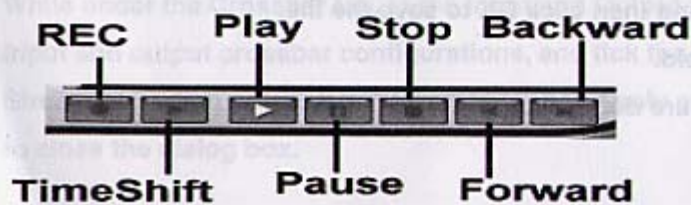
8. Define the frame number you intend to snapshot from the video clips in the SnapShot , to set a new color for Skin.



To change the Navigation Panel to a different color, click Skin, the panel.

Snapshot to take snapshots of the displayed live show.

Record, Time-Shift, Player



Here provides you with various options to help you manage the display of your video, including recording, playing, time-shifting, and so on. To start recording your video files, and press it again to stop recording.

Time shift

The Time shift feature is similar to instant TV replay in regards to the instant replay capability, but may only be used to video content. Once you click on the Time shift button, you may record and play back the current display video file simultaneously.

Pause

Temporarily stop the display of the video.

Stop the display of the video.

Allow you to play the video fast in the forward direction.

Allow you to play the video fast in the backward direction.

Volume

The Volume function assists you in adjusting the display volume.

Click + to increase the volume, or click - to decrease the volume. You may simply click over the volume bar, which is beside the volume control panel to make adjustments of the volume.

To mute the display video, click M.

Display
Volume



Increase
the volume

Control Panel

Decrease
the volume

Video Folder

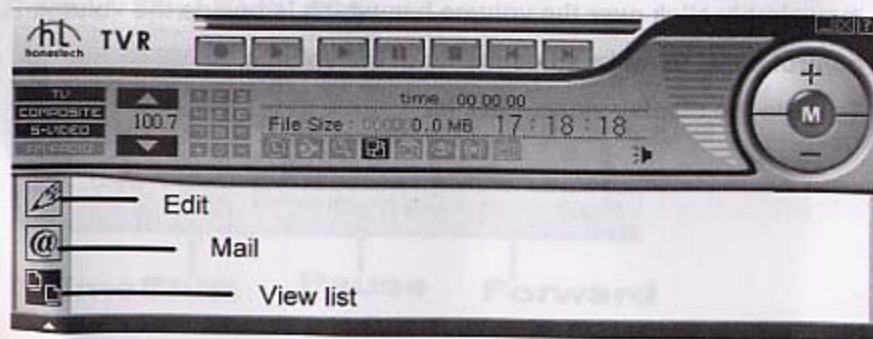


Video Folder

Click the Video Folder button to view the recording list window, in which 3 functions display, including *Edit*, *Mail*, and *View list*.

The following figure demonstrates the Navigation Panel after click the Video Folder button.

To close the opened panel, simply click the white arrow button at the right bottom on the panel.



Edit click and mail choose will be automatically executed, so that you can check that the selected file is attached.

List view

Click thumbnail view, in a file name only view, or a detail view. To change the view type, simply click over the List view icon to switch. To change the view type of the listed files. You may choose to display the files in a to edit the selected file.

To send the selected file as an attachment with your email.

Exit

Click Window Minimum

Click to minimize the TV Plus Navigation Panel to leave TV Plus.

3.2 Help

To open the TV Plus Help to obtain more information about TVR.



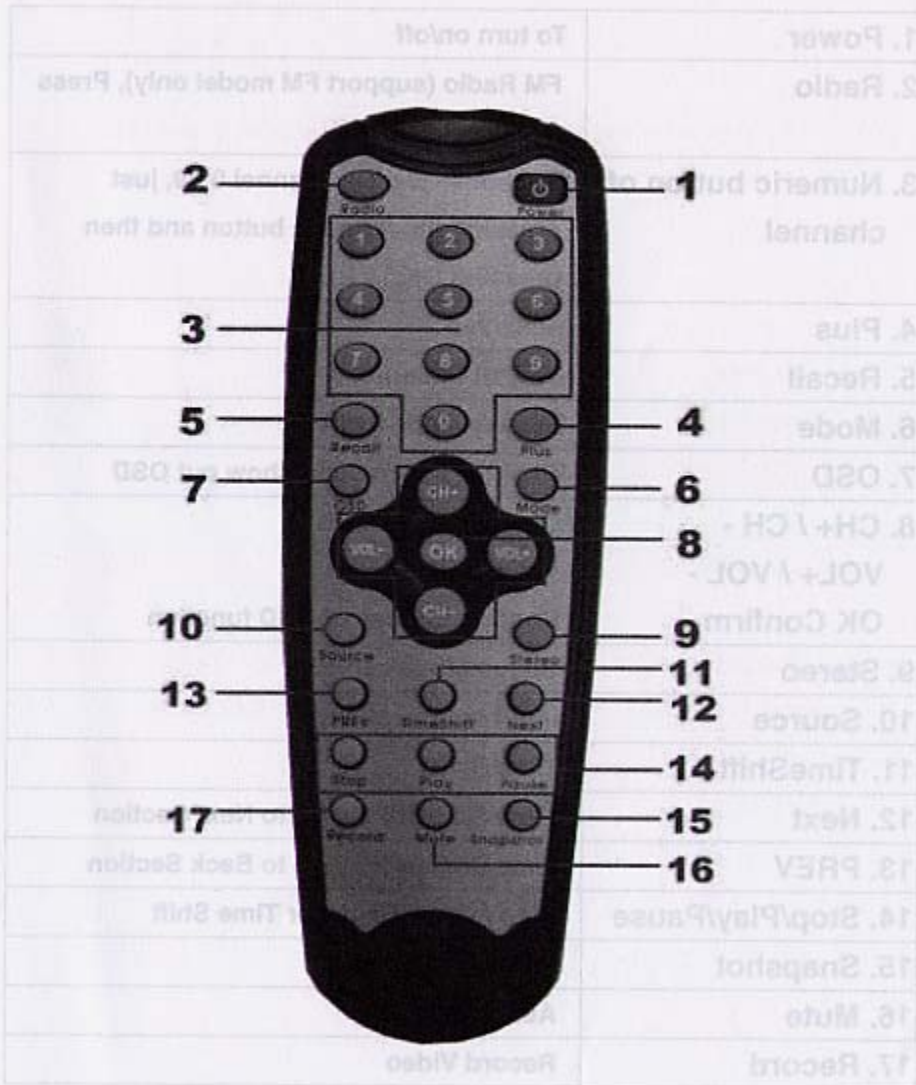
3.3 Troubleshooting

If you encounter a problem or view an error message while operating the TCR mode in TV Plus, do the following procedures for possible solutions:

1. If you see an error message appeared to inform you that **USB ERROR (No USB Driver Present)?** or **No Video Signal?** click **OK** to proceed.
2. On the TV Plus Navigation Panel, check if you have specified the correct source mode as **COMPOAITE** or **S-Video** according to the input source
3. Click the **Properties Settings** button, , on the Navigation Panel to open the **Properties Settings** dialog box. Under the **Video Settings** tab, select **VXIS7011-N7113** in the **Video Capture Device** area.
4. Then click **OK** to finish.

Note: If the problem you have still cannot be solved, please contact Our company website, [Http://www.fastcom.com.tw](http://www.fastcom.com.tw) for more technical support.

3.4 Remote controller operation



To explain the function of remote buttons

1. Power	To turn on/off
2. Radio	FM Radio (support FM model only), Press again will back TV.
3. Numeric button of channel	To choose the TV Channel 0 - 9, just pressing the numeric button and then pressing OK.
4. Plus	Reserved
5. Recall	Re Call Channel
6. Mode	Display Mode Switch
7. OSD	Channel information show out OSD
8. CH+ / CH - VOL+ / VOL - OK Confirm	Channel Up / Down Volume Up / Down Confirm choose of OSD function
9. Stereo	Stereo Mode control
10. Source	Input source change
11. TimeShift	Time Shift
12. Next	Time Shift or Play go to Next Section
13. PREV	Time Shift or Play go to Back Section
14. Stop/Play/Pause	Stop / Play / Pause or Time Shift
15. Snapshot	Capture still frame
16. Mute	Audio Mute
17. Record	Record Video

