

# **Cute ! TV USB**

USB TV box

User's Manual

---

## **FEDERAL COMMUNICATIONS COMMISSION**

This device complies with Part 15 of the FCC Rules Operation is subject to the following two conditions: this device may not cause harmful interference, and (2) this device must accept any interference received, including interference that may cause undesired operation.

This equipment has been tested and found to comply with the limits for a Class B Digital Device, pursuant to part 15 of the FCC Rules. These limits are designed to provide reasonable protection against harmful interference in a residential installation. This equipment generates, uses and can radiated radio frequency energy and, if not installed and used in accordance with the instruction, may cause harmful interference to radio communication. However, there is no grantee that interference will not occur in a particular installation. If this equipment does cause harmful interference to radio or television reception, which can be determined by tuning the equipment off and on, the user is encouraged to try to correct the interference by one or more of the following measures:

- Reorient or relocate the receiving antenna.
- Increase the separation between the equipment and receiver.
- Connect the equipment into an outlet on a circuit different from that to which the receiver is connected.
- Consult the dealer or an experienced radio/TV technician for help.

Notice: Changes or modifications not expressly approved by the party responsible for compliance could void the user's authority to operate the equipment.

## **CE DECLARATION**

This device complies with CE . These limits are designed to provide reasonable protection against harmful interface in a residential installation.

**Printed in TAIWAN R.O.C. No.04020801**

All contents are subject to change without notice.

All trademarks are the property of their respective owner

---

## *Table of Contents*

---

<b>Chapter 1. Overview</b>	<b>1</b>
1.1 Introduction	1
1.2 Features	1
1.3 Specifications	2
1.4 Package Contents	2
1.5 Minimal System Requirements	2
 <b>Chapter 2. Installation</b>	 <b>3</b>
2.1 Hardware Installation	3
2.2 Software Installation	4
 <b>Chapter 3. Operating</b>	 <b>7</b>
3.1 Starting	7
3.2 Hardware push button	8
3.3 Change Video Size	8
3.4 Change Video Source	9
3.5 Still Image Capture	9
3.6 Motion Capture	9
3.7 Channel Preview	9
3.8 Configuration Tools	9
3.9 Channel Return	11
3.10 Channel Input or Memory Input	11
3.11 Remote Controller	11
 <b>Chapter 4. Trouble Shooting</b>	 <b>12</b>

---

### 1.1 Introduction

Congratulations on your purchase of **Cute ! TV USB** bring television to your desktop or notebook computer, You can now get breaking news or watch your favorite sports game on your computer! With the **Cute ! TV USB**, you can also capture live video, still images and record television programs. Just plug this external device into your USB port and turn your computer into a complete video entertainment system

### 1.2 Features

- λ External USB TV device with built-in TV Tuner.
- λ Unique WJPG compression technology to minimize recorded file size
- λ Hardware push button for Motion capture, Snap shot & Channel selection
- λ Watch TV on a desktop or notebook computer
  - Resizable TV window from QCIF size to full screen.
  - 181 channel ready TV Tuner Function.
  - Parental Channel Lock-Out
  - 25-Channel Preview
  - Channel number direct input
  - Auto channel scan.
- λ Image/Video Capture including external video source input
  - Motion Capture and playback
  - Capture video up to 30fps--NTSC and 25fps--PAL
  - Supports Coaxial, Composite and S-Video Input.
  - Full screen (UP to 640X480) motion capture capability.
  - Snapshot function at 1600x1200 pixels BMP/JPG/TIFF format
- λ Supports Brightness, Contrast, Saturation, Hue, Volume, Mute adjustments
- λ Video Source and Video Standard Selection .
- λ Video always on top.
- λ Plug & Play; Powered by USB port.
- λ Optional remote controller functions
- λ With FM radio model available

### **1.3 Specifications**

- λ Input Signal:
  - 75 ohm Coaxial TV Antenna/Cable Input
  - FM radio input (FM model only)
  - S-Video Input
  - Composite Video Input
  - Two L/R audio Input from external video source
- λ Output Signal:
  - Stereo audio output (direct to speaker or Loop to Sound Card)
- λ Warranty: 1 year parts and labor.

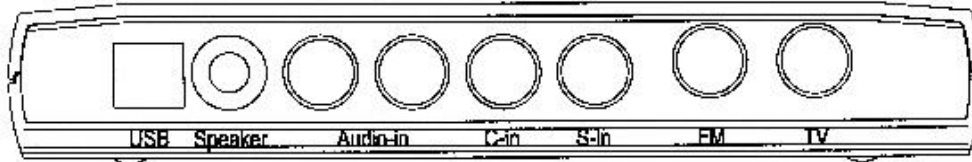
### **1.4 Minimum System Requirements**

- λ USB port
- λ Pentium 233 MMX or better.
- λ Windows 98/Me/2000/XP
- λ 32 MB RAM
- λ Minimum 8 MB free disk space.
- λ Sound card(optional for AVI capture audio)

### **1.5 Package includes**

- λ One **Cute ! TV** USB unit
  - λ One 3.5mm stereo to 3.5mm stereo audio cable
  - λ One USB cable
  - λ One software CD
  - λ Manual
  - λ One Remote controller (Optional)
  - λ Ulead VideoStudio Software CD (Optional)
-

## 2.1 Hardware Installation



**TV** : Connect TV antenna/Cable

**FM (FM model only)** : Connect FM radio antenna

**S-in** : S-Video input from external video device(e.g.VCR)

**C-in** : Composite video input from external video device(e.g.VCR)

**Audio-in** : Audio input from external video device(e.g.VCR)

**Speaker** : This is audio out, you have two choice to get sound.

(a) connect to external speaker device directly.

(b) please use the bundled stereo cable connect it, at another end point connect to Sound card's "Line in" or "Mic-in"

**USB** : Please use the bundled USB cable connect it, and connect the cable another point to a USB port of your computer(You don't have to turn off your computer).

## 2.2 Software Installation (Steps as below for win98)

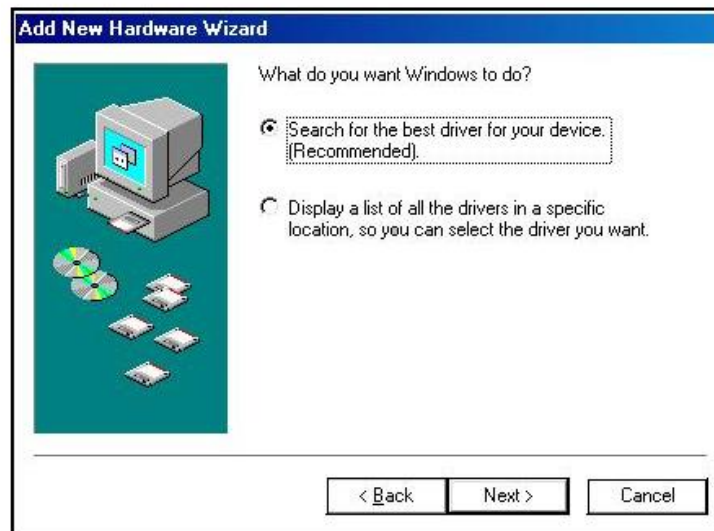
**2.2.1.** Upon connecting the **Cute ! TV USB** into your computer, Win98 will automatically detect the new device, click " **Next** "



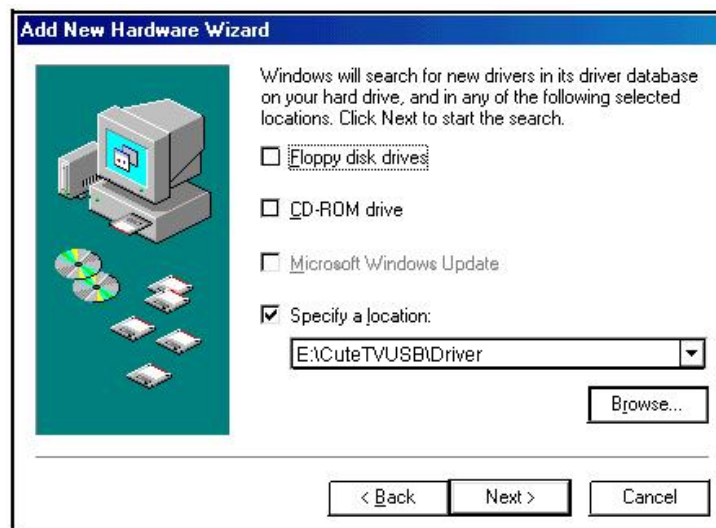
## Chapter 2. Installation

---

### 2.2.2. Select " **Search for the best driver for your device (Recommended)** "; Click " **Next** "

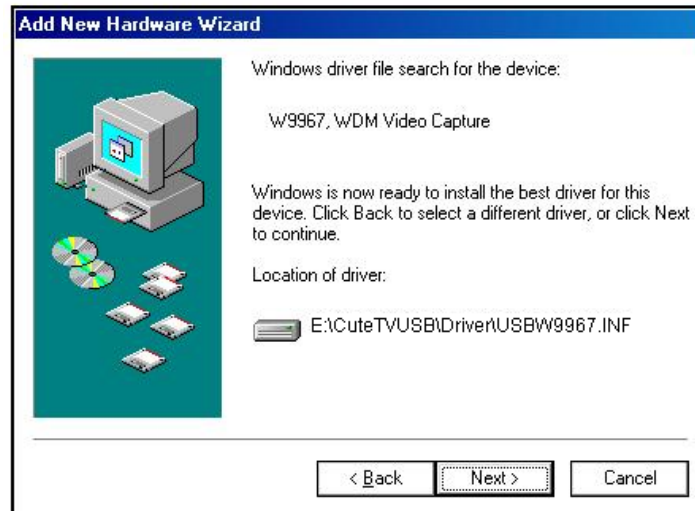


### 2.2.3. Select " **Specify a location** ", type "E:\CuteTVUSB\Driver ", and insert **Multimedia Installation Kit CD-ROM** into your CD-ROM drive; (Suppose your CD-ROM drive in E location)



Click " **Next** "

#### 2.2.4. System found the device driver,



click " **Next** " and it will install the driver.

**Note** : During the install procedure, maybe you were asked to insert the Win98 CD-ROM to find two files as below.

(a) ksclockf.ax : please assign "C:\windows\system" directory to find it.

(b) ks.sys : please assign "C:\windows\system32\drivers" directory to find it.

#### 2.2.5. Please click " **Finish** " to complete the driver installation





## Chapter 2. Installation

---

### 2.2.6. Install application software

- (a) Please run " **E:\CuteTVUSB\AP software\Setup.exe** "
- (b) Follow the instruction and finish Application software installation.

### 2.2.7. Please restart your computer

After the software installed, you will find the Cute ! TV USB icon on the screen.



Also there are five items under Cute ! TV USB program group.

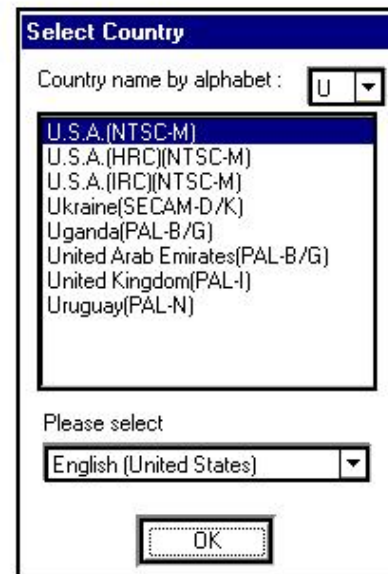
- (a) **Configuration Tool** : Setup the configuration.  
You can setup it even the Cute! TV USB didn't connect.  
Use the BACKUP & RESTORE function, you can keep two sets configuration.(e.g. you can have USA and JAPAN configuration)
  - (b) **Cute! TV USB** : Main application software
  - (c) **Reset Cute ! TV USB** : After your first time choose TV system, if you want change another country TV system, you can run this program to change.
  - (d) **Uninstall** : Remove the Program
  - (e) **User's Guide** : Detail operating manual
-

### 3.1 Starting

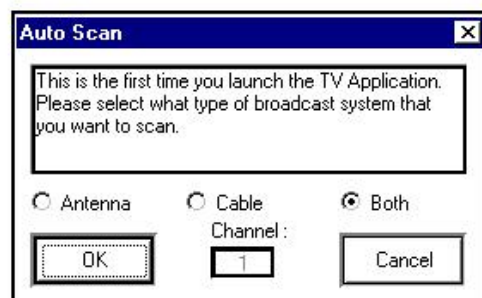
To start the program, you can click the **Cute ! TV USB** icon on the screen  
or execute " **Start → Programs → Cute ! TV USB → Cute ! TV USB** ".

#### 3.1.1 First time launch

If you execute program first time,  
you were asked to choose Country  
system in order to set up correct  
TV/Cable channel;  
Please choose the country you  
connect Cable/Antenna,  
and click "OK"



Auto Scan function was run when first time setting



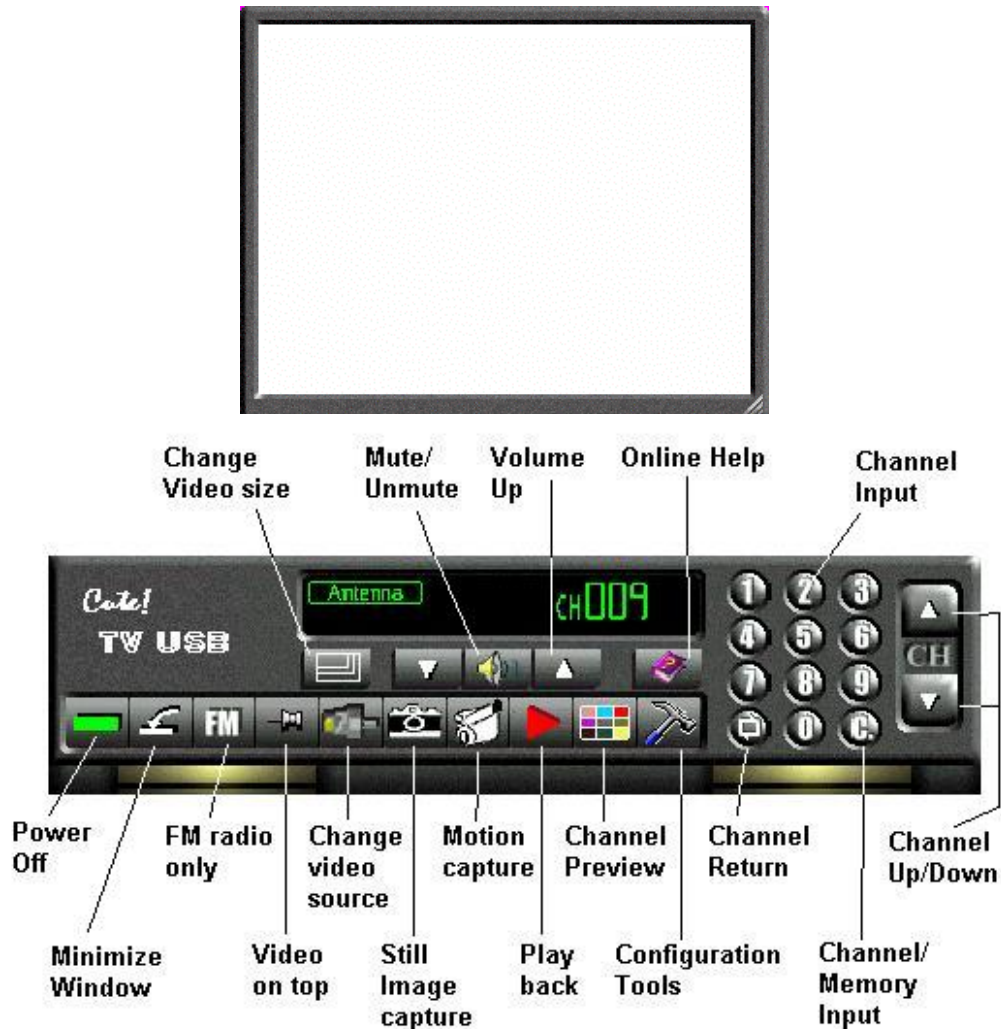
**Note :** Country setting and Auto Scan just for the first time launch program, after you made down it first time, program will skip this setting and jump to running as below.

---

## Chapter 3. Operating

---

After executed, you can see display as below



### 3.2 Hardware push button : There are four buttons on the box.

◀ CH ▶ TV Channel up and down



**Motion Video Capture**

(Push for **recording**, push again for **stop**)



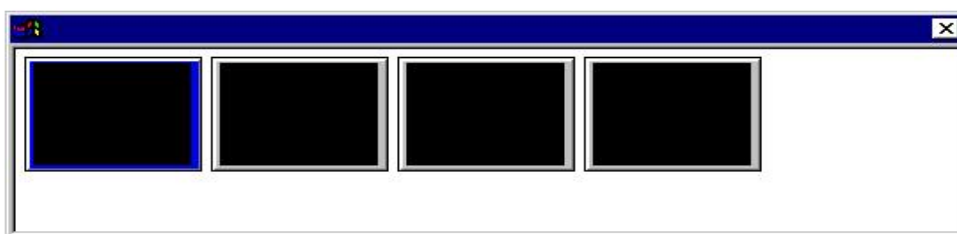
**Still Image Capture**

### 3.3 Change Video Size

- (a) There are three video size for switching.
  - (b) Full screen display : Please double click the screen change to full screen, double click again back to last size.
-

**3.4 Change Video Source** : Click it to switch between Antenna/Cable/Composite/S-Video input source

**3.5 Still Image Capture** : When you click, you will see the capture windows as below, if you want save the image, just click anyone you want, and save the file name. Be sure you type file name to save, or these image will not save automatically,



**3.6 Motion Capture** : Click it to start recording, you can click again to stop the recording.

Recording file will save as **MDDHHMMN.avi** automatically according your computer system day/time.

**M** : Month; from 1 to 9, Oct.->O, Nov.->N, Dec.->D

**DD** : Day; from 01 to 31

**HH** : Hour; from 01 to 24

**MM** : Minute; from 01 to 59

**N** : From 1 to 9 if you make a couple of times recording during same minute.

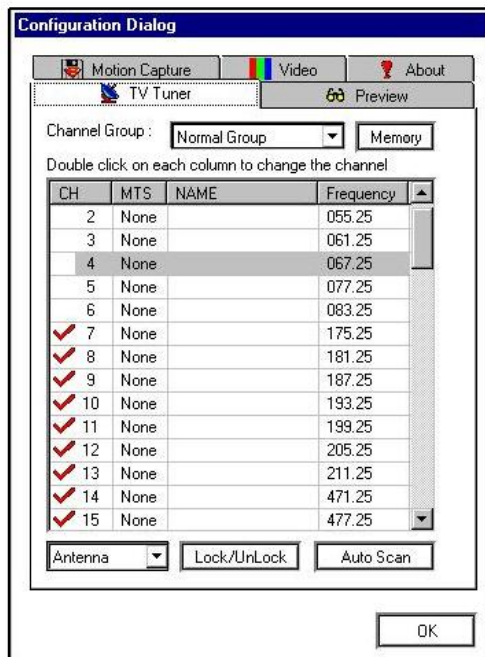
**3.7 Channel Preview** : You can have 25 channel preview, also you can click any channel to display.

## **3.8 Configuration Tools**

**3.8.1 TV Tuner** : This function for Cable/Antenna only, if your video source switch to Composite or S-Video, there is no such function; Please refer 3.4 Change Video Source

---

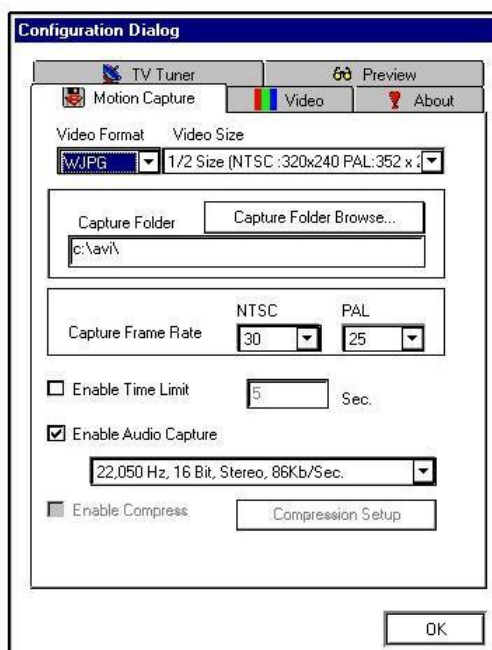
## Chapter 3. Operating



- (a) Channel Group : There are Normal Group for all TV channels and Memory Group for your memory channels
- (b) In Normal Group mode, click "Memory" to memory channel
- (c) Lock/UnLock : Set parent Channel to lock, please make note of your password
- (d) Auto Scan : Scan all TV channel you can receive.

### 3.8.2 Preview : Setup your channel preview , default by 25 channels

### 3.8.3 Motion Capture



- (a) Video Format : Default by WJPG; WJPG is a compression file to save recorded file size.
- (b) Video size : the recording file size upto 640x480, but the recording performance depend on your system speed
- (c) Capture Folder Browse : You can setup the where you want save the file.
- (d) Enable Audio Capture : When you enable this function, please make sure your system sound recording is function ok.

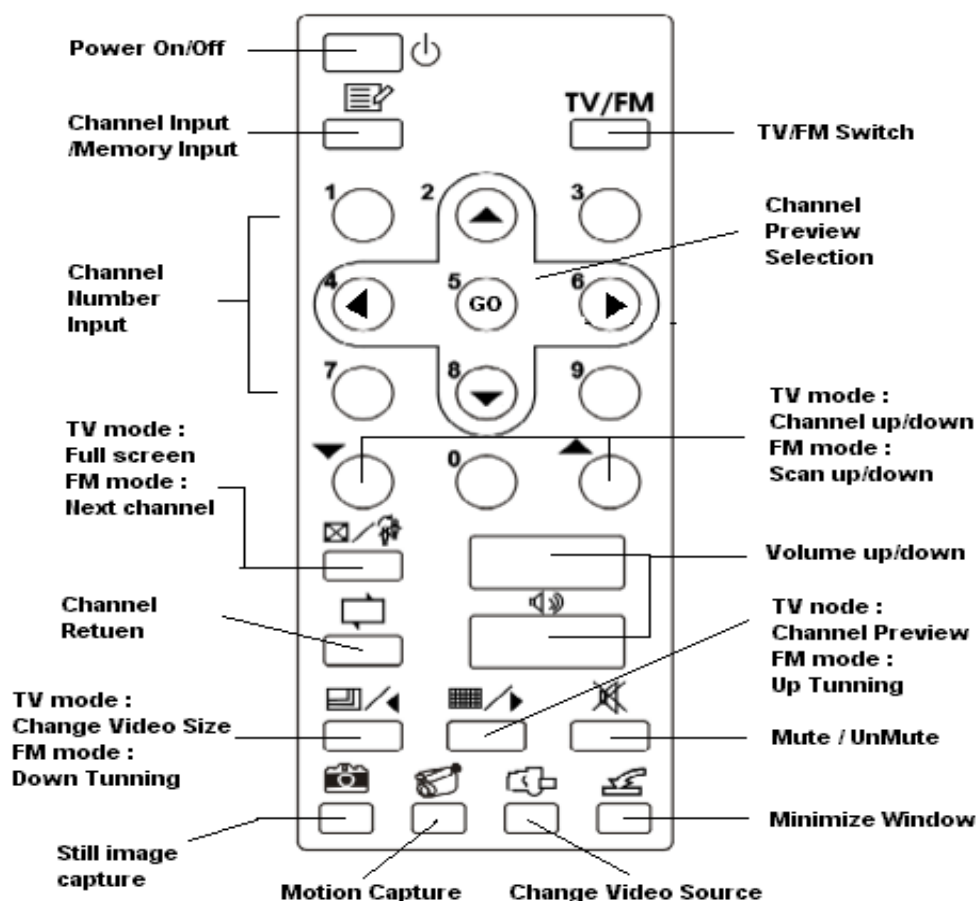
- 3.8.4 Video :** (a) Color : Adjust the best display you want  
 (b) Video System : Please choose correct system for your Composite or S-Video input.

**3.9 Channel Return :** Click to back last channel

### 3.10 Channel Input or Memory Input

- (a) "C" mode : Click number key for normal channel number.  
 (b) "M" mode : Click number key for Memory table channel

### 3.11 Remote controller (for remote controller mode only)



## Chapter 4. Trouble Shooting

---

**Q1 :** Why Black/White video display instead of Color ?

**A1 :** (1) In TV mode : Maybe you choose TV system incorrect in the first time setup. Please exit the Cute ! TV USB program and reset again(run **Start->Programs->Cute!TV USB->Reset Cute!TV USB**) ; please refer Page 6, 2.2.7 (c) and run Cute ! TV USB again  
 (2) In Composite or S-Video input mode : Please make sure video system setup correct; please refer Page11, 3.8.4 Video, (b) video system

**Q2 :** Why can not hear anything when preview mode?

**A2 :** Maybe audio connection incorrect or sound card setup incorrect  
 (1) Please higher the volume of Cute TV USB Panel  
 (2) Check the cable connection, you must connect to external Speaker or Sound card Line-in.(ref.2.1 Hardware installation)  
 (3) Please check your sound card volume control panel.(exit the Cute ! TV USB software and play your sound card only to test sound card work or not, please play any audio file for testing)

**Q3 :** Why can not hear anything after playback the recording file?

**A3 :** (1) Please check your sound card recording function, **do not** make Line-In to be mute, and check the recording volume.  
 You can recording other audio device(e.g.VCR) and playback the file for testing.  
 (2) Make sure **enable audio capture** before recording, please refer page 10, 3.8.3 Motion capture (d)

**Q4 :** When I play Cute ! TV USB, the program is not stable(hang!)

**A4 :** (1) Maybe your VGA card driver can not compatible with direct draw very well, please update new VGA driver  
 (2) Your system resident too many program and share the memory, please release some program as below.  
 Please go to **Start->Programs->Accessories->System Tools->System Information->Tools->System Configuration Utility->Startup** to release

---

- (3) Please lower the hardware accelerator, you can go to **My Computer->Control panel->Display->Settings->Advanced->Performance** to adjust it.

**Q5 :** How can I get best performance in recording mode?

**A5 :** The best performance recording depend on computer system performance, but you also can make some step as below to make better.

- (1) Keep Hardisk space larger.
- (2) Make your hardisk drive DMA active; Go to **My Computer ->Control Panel->System->Device Manager->Disk drives ->GENERIC IDE DISK TYPE47->Properties->Settings**, click **"DMA"**.
- (3) Use speed more than 7200 Rotation hardisk drive
- (4) Disable Power Management in BIOS
- (5) Disable Power Saving mode of monitor
- (6) Close some resident programs of your system
- (7) Restruct your hardisk
- (8) Do not run other program during recording

**Q6 :** Why can't I get smooth display in full screen?

**A6 :** Real time display depend on CPU speed, VGA & memory, please try to lower your system color(e.g. true color->high color), maybe you can get the better display.

**Q7 :** When I change different USB port, the push button function can not work?

**A7 :** Please restart computer.

**Q8 :** Why TV box functions are all work, but Channel up/down on box can not work, also remote controller can not work ?

**A8 :** Maybe your notebook IR port is enable, please disable it.

---



