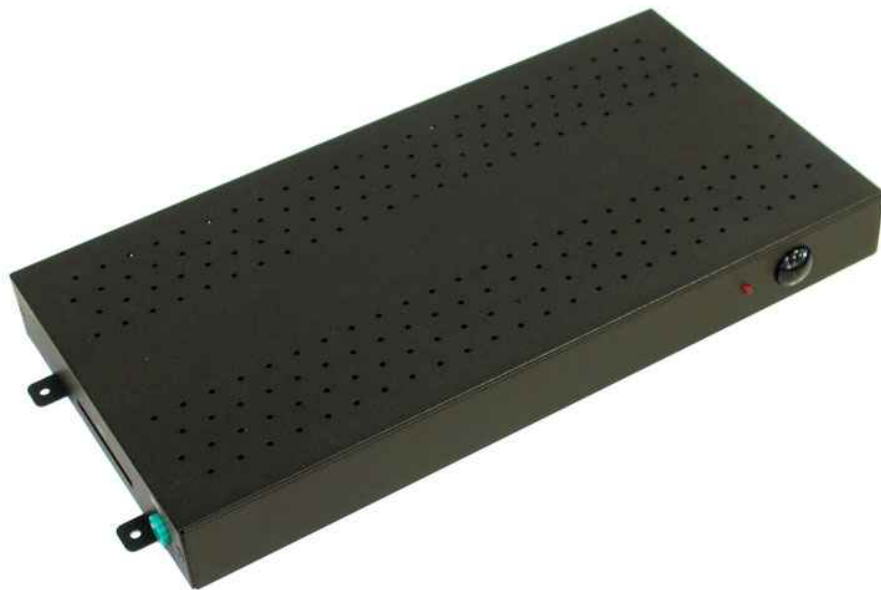


***High Definition Digital  
Media Player 1080P-1 ID# 513***



**Operation Manual**

## Introduction

The High Definition Digital Media Player 1080P-1 is a digital media player that plays movies, music, digital picture and WMV9 from CF memory card without a computer. The High Definition Digital Media Player 1080P-1 supports High Definition movie hardware decode acceleration, presents for you the smoother and clearer picture, it supports high resolution video output such as 1080P / 1080i / 720P for movie theater quality video on a big screen. By connecting to S-Video, Y.Pb.Pr, VGA (resolution up to 1360 x 768), HDMI (1920 x 1080P) and Audio, you can play picture, movie and music on any display device.

The High Definition Digital Media Player 1080P-1 can connect to a wired network at speed up to 100Mbps. This function provides you with maximum throughput for sharing and transferring digital media

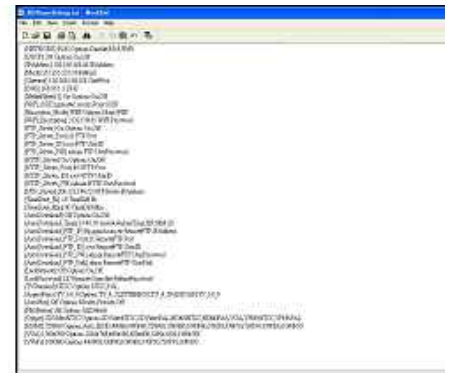
## Features

- 1. Supports multiple file formats :** Music, Picture, Movie and HD WMV9.
- 2. Supports S-Video, Y.Pb.Pr, HDMI, VGA and Audio output.**
- 3. S-Video output supports Composite S-Video and Composite Y.Pb.Pr.**
- 4. HD Y.Pb.Pr output supports resolution :**  
**NTSC Mode(60Hz) :** 480P/ 720P/ 1080i.  
**PAL Mode(50Hz) :** 576P/ 720P/ 1080i.
- 5. HDMI Output :** 480P/ 720P/ 1080i/ 1080P.
- 6. VGA output supports resolution :** 640x480/ 800x600/ 1024x768/ 1280x1024/ 1360x768.
- 7. Supports RS-232 port for computer control with ASCII command (play, stop, pause...etc).**
- 8. Connect using an Ethernet network cable at up to 100Mbps.**
- 9. The source of HD WMV9 MP@HL (Main Profile / High Level) supports resolution up to 1920x1080 (1080P) and the maximum bit rate is 12Mbps.**
- 10. Supports CF memory cards. (Suggest using the high speed (150X) CF card)**
- 11. Supports HTTP Control Function**
- 12. Supports Auto Key Lock Function**

- 13. Exports the Configuration Value:** You can export the configuration value to the CF card. The configuration value can be modified on your PC, and can be applied to the High Definition Digital Media Player 1080P-1 or others.
- 14. Compatible with Windows Media Player 11:** Play media files stored in a network computer.
- 15. Supports FTP Auto Download Function:** Connect to Remote FTP server and download data to the CF card automatically.
- 16. Supports Download Pause / Resume Function:** Continue unfinished downloads upon next session.
- 17. Embedded FTP Server.**
- 18. Supports NTP Network (G.M.T) Timer.**
- 19. Supports Universal Plug and Play (UPnP) and DHCP.**
- 20. Supports SLIDE SHOW Function** (interval time with 10/ 15/ 30/ 60 seconds).

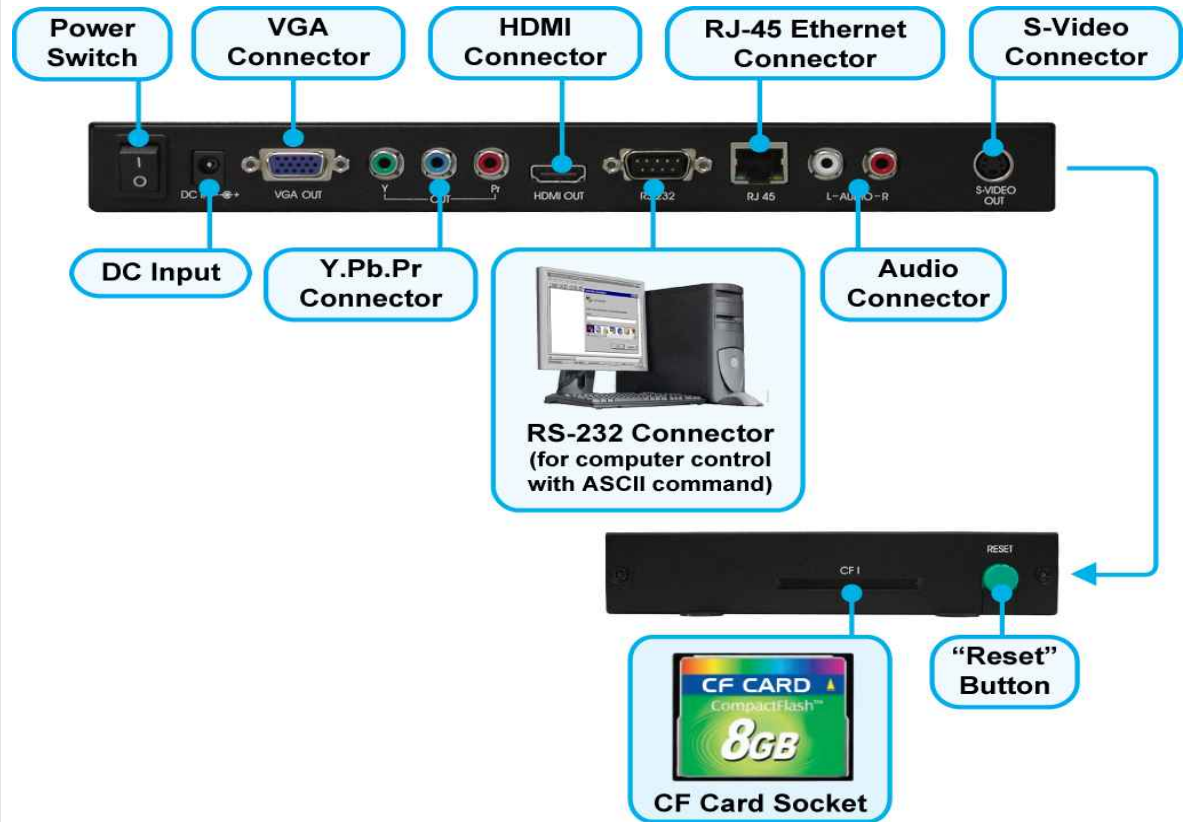


**HTTP Command Function**



**Exports the Configuration Value  
(modify on your PC)**

## Connection



## Remote Control

- POWER** : Toggle between power on & off.
- TV MODE** : Select the output mode. **Numeric Key**
- CLEAR** : Delete last entry.
- SELECT** : Select a function or to play the selected file.
- OSD** : Toggle between OSD on & off.
- AUTOPLAY** : Turn on/off the auto play function.
- SETUP** Go into the setup menu. **MUTE** Mute the audio output.
- + VOLUME -** : Volume up/ down.
- ENTER** : Go into a function or confirm a command.
- ▲-▶-▼-◀** : Select items or modify values.
- RETURN** : Go back one layer.
- NTSC / PAL** : Select the TV type between NTSC and PAL.
- SHUFFLE** : Toggle between shuffle on & off.
- PREV** : View the previous file.
- Play the previous file if in playback.
- PLAY** : Play the selected file.
- NEXT** : View the next file.
- Play the next file if in playback.
- REPEAT** : Select the repeat mode.



**REV** : Rewind movie or music file.  
**STOP** : Stop the playing file.  
**FWD** : Forward movie or music file.  
**INFO** : Display the information of the selected file.  
**SEARCH** : Search video (movie) timeframe.  
**PAUSE STEP** : Pause the playback or play frame by frame.  
**ZOOM**: Zoom in/ out on the movie or picture.

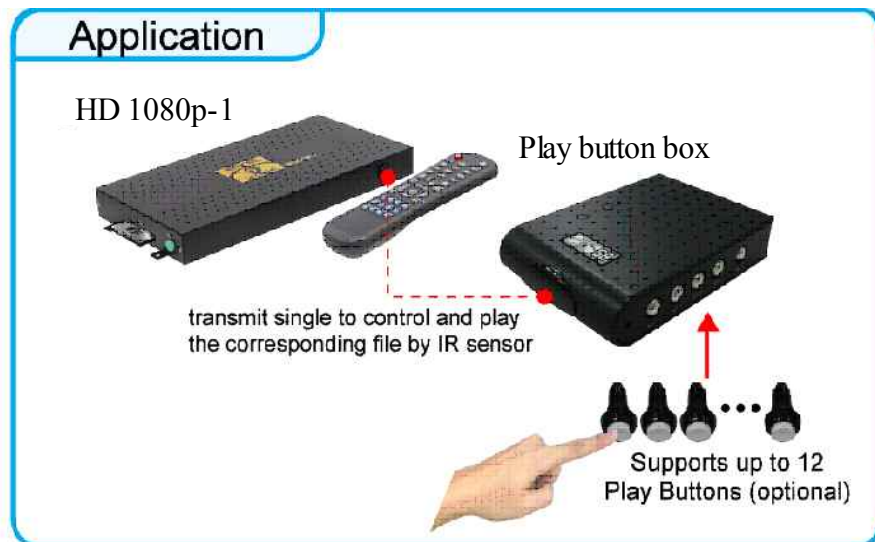
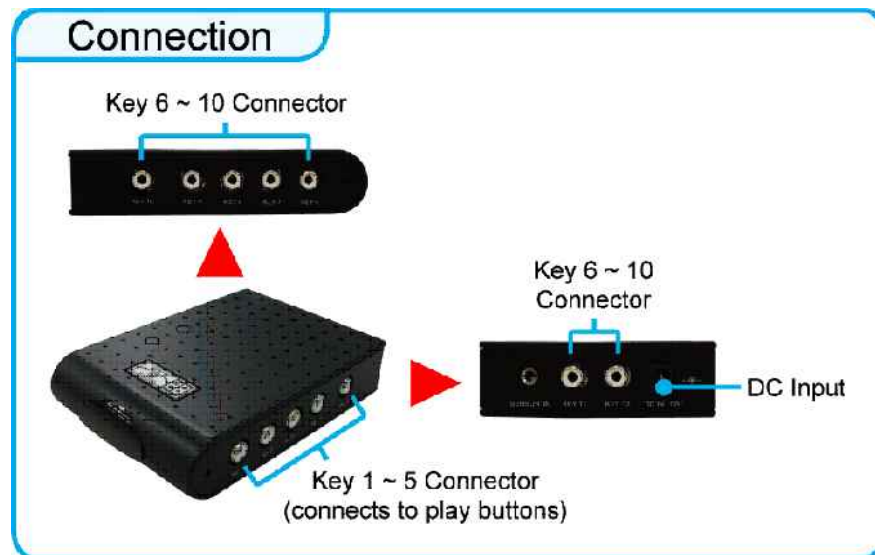
## Specifications

1. **Video Outputs:**  
S-Video (Composite S-Video & Composite Y/Pb/Pr)
2. **HD Y/Pb/Pr Resolutions:** NTSC mode(60Hz)=480p,720p,1080i;  
PAL mode(50Hz)=576p, 720p, 1080i
3. **HDMI Resolutions:** 480p, 720p, 1080i, 1080p
4. **VGA Resolutions:** 640x480, 800x600, 1024x768,1280x1024,  
1360x768 (VGA, SVGA, XGA, SXGA, Flat Panel Widescreen)
5. **HD WMV9 MP@HL(Main Profile/High Level):** 1920x1080 (1080p)
6. **Slide Show Resolutions:** Normal-1920x1080(16:9)5 sec interval;  
4368x2912(16:9)10 sec interval.
7. **Video Output Connections:**  
**S-Video:** 4 pin mini-din (female)  
**HD Y/Pb/Pr:** 3xRCA sockets (female)  
**HDMI:** HDMI socket (female)  
**VGA:** 15 pin D-sub socket (female)
8. **Audio Connection:** 2 x RCA sockets left/right (female)
9. **Ethernet Connection:** RJ45 socket (female)
10. **RS232 Connection:** 9 pin D-sub socket (male)
11. **CF Memory Card:** High Speed (150x) recommended.
12. **Power Supply:** 12vDC
13. **Dimensions:** 29cm(w), 14.5cm(d), 3cm(h)
14. **Weight:** 0.829gms

## OPTIONAL AUXILIARY EQUIPMENT

### Play Button Box

1. The Play Button Box supports up to 12 play-button inputs.
2. Press one of the play buttons to play the corresponding file.



### Wireless 5/ 8 Touch-Sensor Buttons

1. Press one of the wireless touch-sensor buttons, the High Definition Digital Media Player 1080P-1 will play the corresponding file automatically.
2. The number of touch-sensor buttons can be customized to 12, 24 or 36 for OEM project.
3. Used with various operating environment (glass, plastics and acrylic material, except metal material), the thickness supports 3mm -5mm, and it can be customized to 5cm for OEM project.

