

Digital to Analog Audio Remote Control - # 15390



Operation Manual

Introduction

The Optical & L/R to L/R Audio Controller allows user with flexible and distance control over audio performance. With L/R & Optical inputs to L/R output, this device provides a digital to analog conversion or analog to analog bypass function. Controls like Telnet & WebGUI allow user with easy adjustment and remote over audio output. On-panel control with LED indication adds-on the friendly use for the device

Applications

- Entertainment Room / Home Theater
- Show Room / Demo Room
- Audio equipment central control

Features

- Support optical input sampling rate up to 192kHz
- Supports Optical & L/R inputs to L/R output
- Support Stereo out or Mono out
- Support Volume control by Telnet or WebGUI
- Control switch by single button press

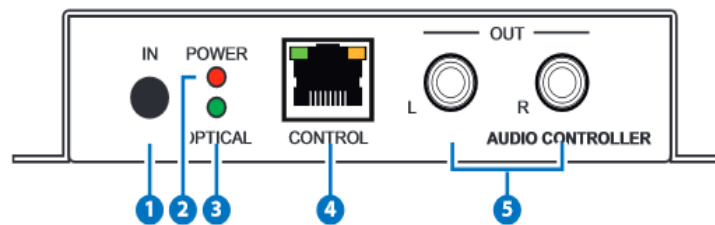
System

Requirements

Input source equipment such as CD /DVD player or computer via optical or analog stereo output to amplifier or speaker with analog stereo output.

Operation Controls and Functions

Front Panel



1. IN Button:

Short press IN button to switch the audio source. Long press IN button up to 4 seconds will reset the device to Default Ethernet Setting. The Power LED will blink 5 times.

2. POWER LED:

When power is on, the LED light will illuminate.

3. OPTICAL LED:

When source switch to Optical input selection, the LED light will illuminate. When switch to L/R the LED will unilluminate.

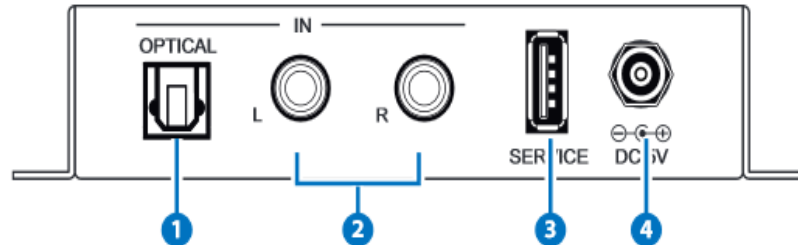
4. CONTROL:

This slot is to connect with intranet service line for telnet/WebGUI control.

5. L/R OUT:

These slots are to connect with active speakers or amplifier's L/R inputs.

Rear Panel



1. OPTICAL IN:

This slot is to connect with input source's optical output port.

2. L/R IN:

These slots are to connect with input source's L/R output port.

3. SERVICE:

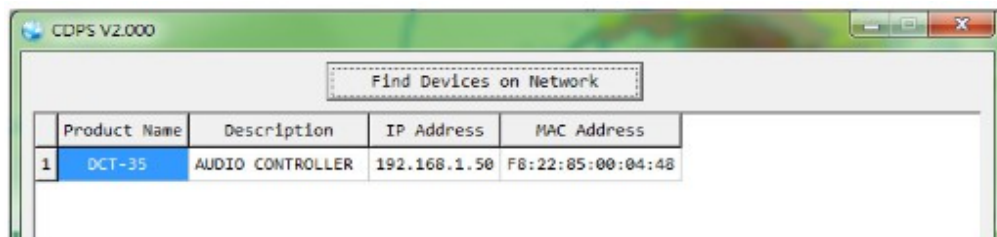
This slot is reserved for USB firmware update use only.

4. DC 5V:

Connect the adaptor included in the package and connect to AC wall outlet for power supply.

IP Searching Software Application and Installation

Please download the software from www.converters.tv with file name CDPS V2.000 and save it in a directory where you may use it later. Connect the AUDIO CONTROLLER with an active network system and open the CDPS V2.000 application from the directory in a PC/Laptop. Click on Find Devices on Network and a list of the devices will show up.



Double click on the product name and an InfoFrom page will appear to show the products' detail or use the IP Address listed to control the device directly.

Default Ethernet Setting is on Static mode with:


IP: 192.168.1.50

SUBNET: 255.255.255.0

GATEWAY: 192.168.5.254

HTTP PORT: 80

TLENET PORT: 23



The screenshot shows a web interface window titled "InfoFrom". It displays various system and network parameters. The network configuration section includes fields for IP Address (192.168.1.50), Subnet Mask (255.255.255.0), Gateway IP (192.168.5.254), and DNS (0.0.0.0). The IP Mode is set to "Static" via a dropdown menu. Other settings include Web GUI Port (80) and Telnet Port (23). The interface also shows hardware and firmware information, such as Product ID (2236), Product Name (DCT-35), MAC Address (F8:22:85:00:04:48), S/N (SN:2236), Firmware Version (V0.60), and Hardware Version (PCB-2330). A description of "AUDIO CONTROLLER" is provided, along with a "Web GUI" link. At the bottom, there are "Save" and "Reboot" buttons.

Product ID	2236
Product Name	DCT-35
MAC Address	F8:22:85:00:04:48
IP Address	192.168.1.50
Subnet Mask	255.255.255.0
Gateway IP	192.168.5.254
DNS	0.0.0.0
IP Mode	Static
Web GUI Port	80
Telnet Port	23
S / N	SN:2236
Firmware Version	V0.60
Hardware Version	PCB-2330
Description	AUDIO CONTROLLER
Web GUI	Web GUI

Save Reboot

Telnet Commands

Command Name	Description	Description of Parameter
SOURCE N	SOURCE SELECTION	N=0/Optical, 1/RCA IN or ?
VOL N	OUTPUT VOLUME SETTING	N=-40~10dB (0) or ?
MUTE N	OUTPUT VOLUME MUTE CONTROL	N=0(Unmute), 1(Mute) or ?
MONO N	SET MOMO OR STEREO MODE	N=0(Stereo), 1(Mono) or ?
NAME N1 N2	SET INPUT NAME	N1=0(Optical), 1(RCA) N2=Up to 24 Characters or ?
IPCONFIG	SHOW IP CONFIGURATION STATUS	None
SIPADDR N	SET ETHERNET IP ADDRESS	N=X.X.X.X X=0~255 (192.168.1.50)
SNETMASK N	SET ETHERNET NETMASK	N=X.X.X.X X=0~255 (255.255.255.0)
SGATEWAY N	SET ETHERNET GATEWAY	N=X.X.X.X X=0~255 (192.168.5.254)
RSTIP	IP CONFIGURATION RESET TO <DHCP>	None (Statics)
VER	SHOW UNIT FIRMWARE VERSION	None
REBOOT	SYSTEM REBOOT	None
FADEFAULT	FACTORY RESET	None
ETH_FADEFAULT	ETHERNET PARAMETER SET FACTORY DEFAULT	None
?	SHOW COMMAND LIST	None
HELP	SHOW COMMAND LIST	None

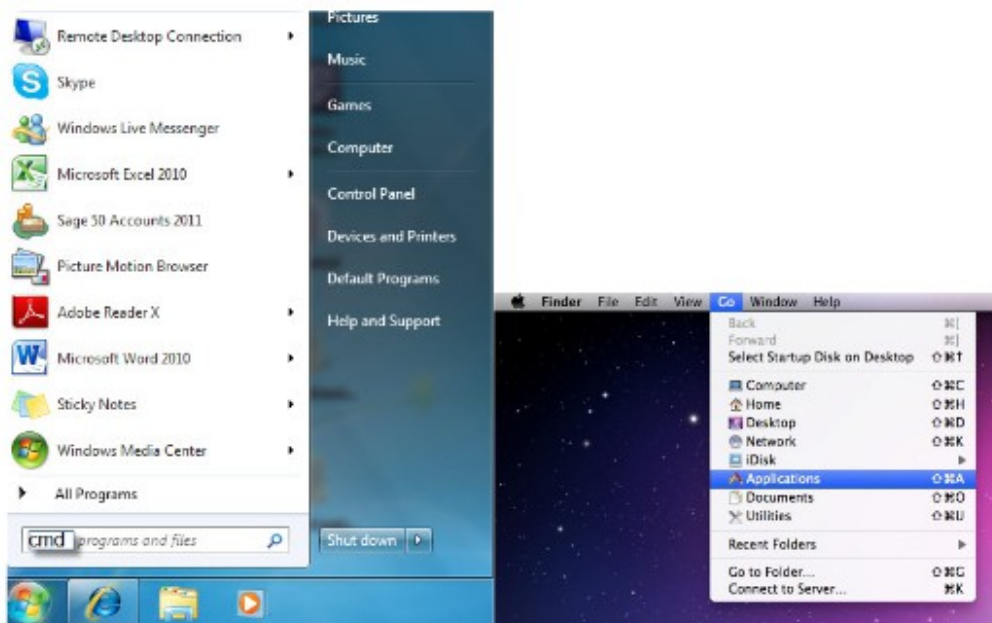
Note: All the RS-232 command will be not executed unless followed with a carriage return. All commands are case-sensitive

Telnet Control

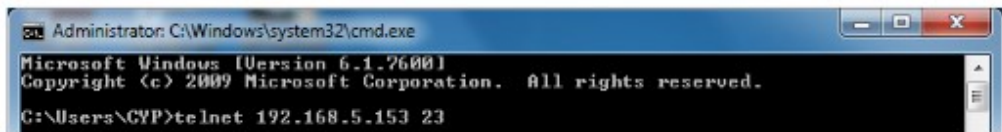
To access the telnet control in Windows 7, click on 'Start' menu and type "cmd" in the Search field then press enter.

Under Windows XP go to the 'Start' menu and click on "Run", type "cmd" and press enter.

Under Mac OS X, go to Go→Application→Utilities→Terminal



Once in the command line interface (CLI) type "telnet", then the IP address of the unit and hit enter.



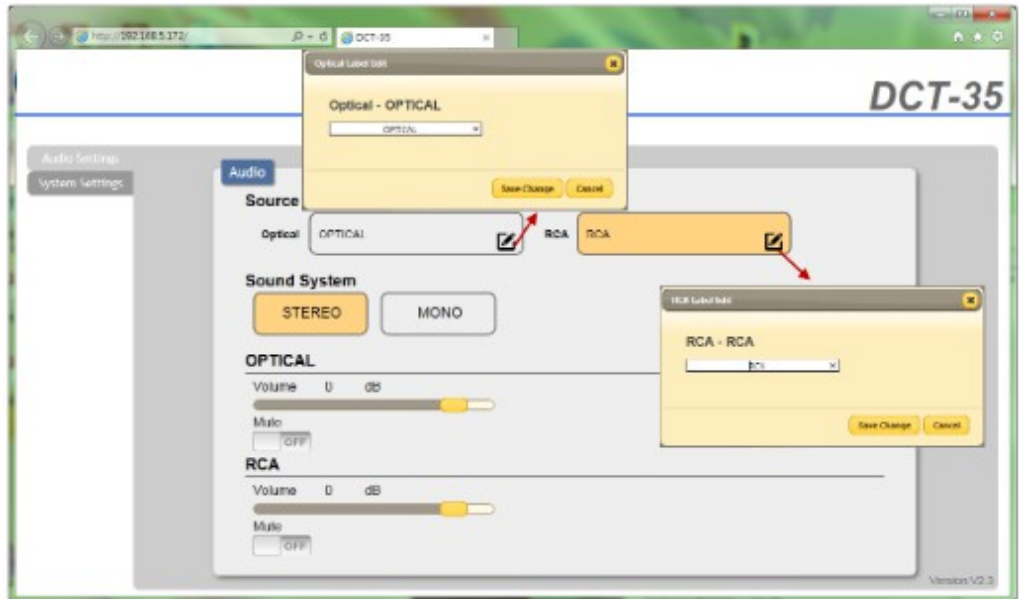
Type HELP or ? to bring out all the commands.

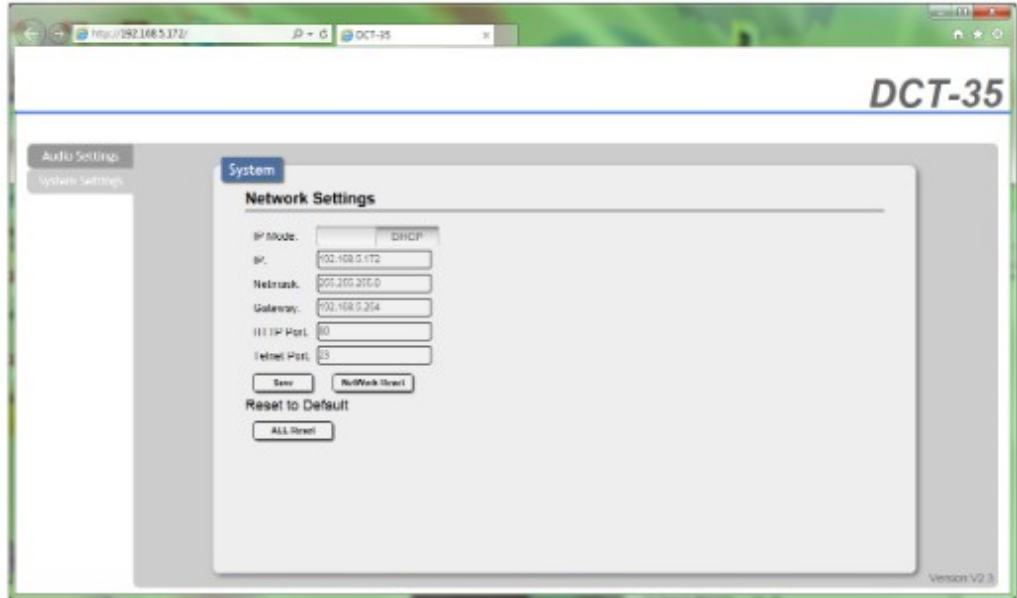
```
Telnet 192.168.5.172
Welcome to TELNET.
help
SOURCE          : SOURCE SELECTION 0:OPTICAL, 1:RCA IN
UOL             : OUTPUT VOLUME SETTING
MUTE            : OUTPUT VOLUME MUTE CONTROL 0:UNMUTE, 1:MUTE
MONO            : SET MONO OR STEREO MODE 0:STEREO, 1:MONO
NAME            : SET INPUT NAME
IPCONFIG        : DISPLAY THE CURRENT IPCONFIG
SIPADDR         : SET ETHERNET IP ADDRESS
SNETMASK        : SET ETHERNET NETMASK
SGATEWAY        : SET ETHERNET GATEWAY
RSTIP           : IP CONFIGURATION RESET TO <DHCP>
VER             : SHOW UNIT FIRMWARE VERSION
REBOOT          : SYSTEM REBOOT
FADEFAULT       : ALL CONFIGURE SET TO FACTORY DEFAULT
ETH_FADEFAULT   : ALL ETHERNET CONFIGURE SET TO FACTORY DEFAULT
?              : SHOW DESCRIPT OF COMMAND
                USE <? N, N=COMMAND NAME> TO SHOW DESCRIPT OF COMMAND
HELP           : SHOW DESCRIPT OF COMMAND
                USE <HELP N, N=COMMAND NAME> TO SHOW DESCRIPT OF COMMAND
```

Note: All the commands will be not executed unless followed by a carriage return. Commands are case-insensitive. If the IP is changed then the IP Address required for Telnet access will also change accordingly

Web GUI Control

On a PC/Laptop that is connected to an active network system, open a web browser and type device's IP address on the web address entry bar. The browser will display the device's Audio and System Settings for users to control





Specifications

Input Ports	1 x RJ45(Control) 1 x L/R 1 x Optical 1 x USB(service)
Output Ports	1 x L/R
Power Supply	5VDC/2.6A (US/EU standards, CE/ FCC/ UL certified)
ESD Protection	Human body model: ±8kV (air-gap discharge) ±4kV (contact discharge)
Chassis Material	Metal
Silkscreen color	Black
Dimensions	55mm (W) x82mm (D) x 22.5mm (H)
weight	342g
Operating Temperature	0 °C~40 °C / 32 °F ~ 104 °F
Storage temperature	-20 °C~60 °C / -4 °F ~ 140 °F
Relative Humidity	20~90% RH (no condensation)
Power Consumption	2w

Audio Specifications						
Input	Output	Output level	T.H.D+N (A-Weight)	Frequency Response	SNR	Crosstalk
Optical 0dBFS 1kHz	L/R	2Vrms±10 %	<0.01%	±1dBFS	>80dB	<-80dB
L/R 2Vrms 1kHz	L/R	2Vrms±10 %	<0.01%	±1dBFS	>80dB	<-80dB

Connection Diagram

